

MIGREC

Migration, Integration and Governance Research Centre



Policy Brief on Youth Migration

Aspirations, intentions and drivers of youth migration



Prof. Danica Šantić, UB-GEF



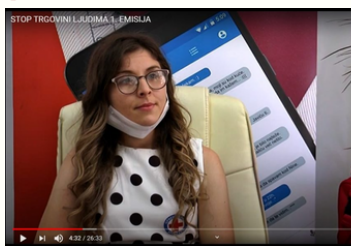
Friedrich Ebert Stiftung published an analytical report „Leaving Serbia – Aspirations, Intentions and Drivers of Youth Migration“ authored by Danica Šantić, based on the research conducted in four municipalities in Serbia:

- Youth outflow from Serbia has increased in recent decade. Together with unfavorable demographic trends, this could lead towards the long term consequences and destabilizing effects.
- Young people have very high mobility aspirations. Main drivers of emigration are unemployment and low standard of life whereas political instability, crime and corruption do not feature as much.
- How to improve the transfer of research results into policy-making and how to enhance the evidence based policies on migration? Proactive migration policy model and properly designed measures can shape ongoing and future migration, mitigating incentives to migrate and encouraging return.

Project activities



Consultations about the MIGREC's vision, mission and core values



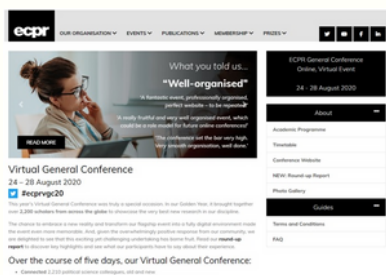
Danijela Pavlović at the television about human trafficking



Online discussion „Protection of Migrant Children during the Coronavirus Outbreak“ organized by FPN KonekTas



Ana Milojević, Aleksandra Krstić and Kristina Milić at IMISCOE online conference



Biljana Đorđević at the 14th ECPR Virtual General Conference



Biljana Đorđević and Panagiotis Paschalidis at the Summer School on Refugee Rights and Migration organized by Center for refugee law and migration, Skopje

Visit the project web-site for more information under <http://migrec.fpn.bg.ac.rs/events/>



The University Of Sheffield.

The Migration Research Group (MRG) is an interdisciplinary network of over 100 scholars, comprising of PhD students, Early Career Researchers and mid- and senior-level colleagues, at the University of Sheffield in the UK. The MRG is based in the Faculty of Social Sciences, and brings together colleagues from Sociology, Social Policy, Social work, Geography, Urban Studies, Politics and Law, while regularly connecting with the University's migration scholars in Arts and Humanities.

The MRG's approach is informed by a broad understanding of migration encompassing motives for migration, impacts on sending and destination countries, as well as the broad range of effects (legal, social, economic and political) and experiences of migration, in various geographical regions, spanning Global North and South.

In addition to MIGREC, MRG members are currently participating in a wide range of projects. These include ones funded by the UK Economic and Social Research Council, such as Sustainable Care, 'Everyday Bordering in the UK' and Faith Responses to Modern Slavery, other EU H2020 projects, such as MIMY, and Life at the Frontier, funded by Nordforsk and the Economic and Social Research Council. Through these and other projects, the MRG has a wide range of partners in the UK, Europe and internationally, spanning academia, the third sector and government.

You can see the Project team members at the project web-site under <http://migrec.fpn.bg.ac.rs/about/meet-the-team/>

Follow us



<http://migrec.fpn.bg.ac.rs/>